

# ABSOLUTELY POSITIVELY WINDY DEAF

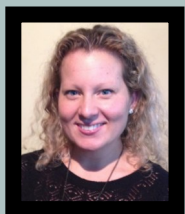


August 2015

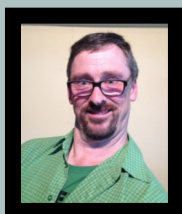
# Contents

WDS Board of Management	3
President's Report	4
Join WDS	5
WDS Newsletter Advertising Rates	6
Events Calendar	7
Doreen Howell turning 100!	8
Babies, babies and more babies	9
Deaf Sports New Zealand Community Meeting	10
7th NZ Deaf Short Film Festival Poster	11
7th NZ Deaf Short Film Festival	12
NZ Deaf Short Film Festival Ticket Sale	13
NZ Deaf Short Film Festival Merchandise Available	14
Video Remote Interpreting Service	15
TXT 111	16
WDS Membership Form	17

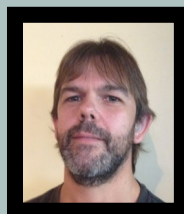
# WDS BOARD OF MANAGEMENT



**Shannon Krogmann**  
President



**Robert Cameron**  
Treasurer



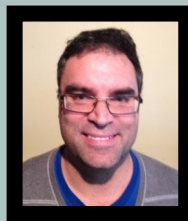
**Riaan J Van Vuuren**  
Co Treasurer



**Joanne Becker**  
Secretary



**Erich Krogmann**  
Committee

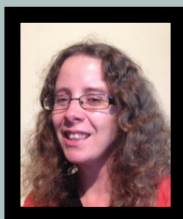


**Craig Becker**  
Committee



**Candice David**  
Committee

**Chuck Odsey**  
Committee



**Nicolette J Van Vuuren**  
Editor Newsletter

**Life Members:** Florence McNatty, Doreen Howell, Janette Smith, Toni Rees, Tony Walton, Kaz Witko, Pam Witko, Maureen Thompson, Robert Cameron, Alex Jones, Tony Kuklinski, Eric Blum

## PRESIDENT'S REPORT

Welcome to August, it's amazing to see how quickly the year has gone by! Hope you all have been well and keeping warm recently.

We are very excited to announce we have been successful in our application for a Community Coordinator to work with Wellington Deaf Society, this is a new position, with the purpose of this position is to organise and promote events for NZSL users together in a friendly environment.

The Community Coordinator would also be doing administrative, fundraising duties to maintain our Society with our operations and funding.

We would like to thank NZ Sign Language Board for enabling this wonderful opportunity. If you are interested to apply for this position or to get more information, please be in touch with us.

Additionally, in conjunction with above role, we have been very fortunate to receive funding from Mainland Foundation Trust to cover equipment necessary for the Community Coordinator.

In regards of my report from last month about NZSL in Health focus groups, we have been working very hard to organise this and there will be a variety of sessions across Wellington area for you to attend and share your experiences when receiving medical treatment – at your local GP, hospital or with any health professional.

We are making this project accessible for all by having a focus group, online survey and one by one, as we wish to collect as much findings as much as possible by using all methods.

As you know we have a NZSL friendly restaurant at CQ Hotels in Wellington, Lower Hutt has two deaf-friendly cafes, Little Café at the War Memorial Library (Lower Hutt Library) and Co-Ed, on Kings Crescent, opposite the Police station.

They are a mix of deaf and hearing staff, all learning NZSL, they serve delicious coffee and fresh sweet and savoury treats. It is fabulous to see a number of hospitalities learning NZSL and making their cafes deaf-friendly. I suggest you meet them, chat and try out their delicious food options – in NZSL!

Keep in touch, see you at one of our events,

Shannon Krogmann  
President

*For a NZSL version of this report, please visit our Facebook page.*

**WDS Online Fundraising website: <http://www.givealittle.co.nz/org/wds>**

# about WDS

## CONTACT US



**Email:** [secretary@wds.org.nz](mailto:secretary@wds.org.nz)



**Facebook:** Wellington Deaf Society



**Post:** PO Box 6028, Marion Square, Wellington

## BECOME A MEMBER

We welcome everyone to WDS, and encourage everyone to join as a member of WDS—families, hearing people, NZSL Students, interpreters, hard of hearing, and Deaf people.

Membership for 2015 is free, with email newsletter. If you want to receive a newsletter in the post it will cost \$10 a year. Fill out a membership form to join!

## TEXT NOTIFICATIONS



Do you want to be informed when WDS is open, and when special events are on?

Text 022 024 5229 to be added to the list.

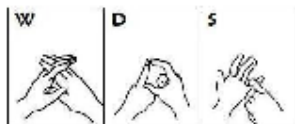
## NEWSLETTER ADVERTISING

If you wish to place an advertisement in the newsletter please email [newsletter@wds.org.nz](mailto:newsletter@wds.org.nz). Please see flyer in newsletter for additional information.

**Upcoming deadline dates:** 20 August, 20 September.

## FRIDAY DEAF CLUBS

WDS has a Deaf Club that meets fortnightly on a Friday evening (7pm onwards) at various locations around Wellington. Keep your eye on our Facebook page or on the events page in this newsletter for location and dates. Email [secretary@wds.org.nz](mailto:secretary@wds.org.nz) if you have any queries. In addition to the Deaf Club, special events are organised occasionally and will be advertised in advance.



# Wellington Deaf Society

## Newsletter Advertising Rates

*(Prices are exclusive of GST)*

Newsletter is A5 size.

Advert must be provided by you.

Full page in full colour \$30 per month (portrait or landscape orientation)

Half page in full colour \$15 per month (landscape only)

5% discount for those who pay for a full year up front (11 issues for \$313.50 full page, or \$156.75 half page)

WDS sponsors (at the BOM's discretion) can get up to three months advertising free

Community and fundraising events organised by the Deaf community (including other Deaf Clubs/Societies), for the Deaf community will be advertised for free

Current WDS Deaf Members get free advertising.

### Audience Reach

Electronic newsletter emailed out monthly in PDF format.

It is also posted out to a number of members with no internet access, and to other Deaf Clubs/Societies around New Zealand, for their members to read.

A copy of the newsletter is readily available at the Deaf Club, for guests to read.

In the short to medium term, we aim to have the newsletters available for download on the WDS website, when we develop a new website.

*Deadline for submission of advert – 20<sup>th</sup> of every month, for following month's newsletter. Please note there is no newsletter in January. Email [secretary@wds.org.nz](mailto:secretary@wds.org.nz).*



# EVENTS CALENDAR

## AUGUST AND SEPTEMBER

### **SATURDAY 1st August**

WDS Anniversary  
Dunlop Restaurant,  
CQ Hotels  
Cuba Street  
6pm

### **FRIDAY 14th August**

For Deaf Club  
The Butcher &  
Brewer  
175 Jackson Street  
Petone

### **FRIDAY 28th August**

For Deaf Club  
Supply Room  
105 Mana Espla-  
nade  
Mana

### **WEEKEND 4-6 September**

NZ Deaf Short  
Film Festival

Dear Deaf Community, Family and Friends,

On the 1<sup>st</sup> September 2015 my mother Doreen will be celebrating her 100<sup>th</sup> birthday and she wanted to share a little bit about her amazing 100 years.

Doreen was born in Westport and was the eldest child in her family. After Doreen, there was Reg, her hearing brother who is now 96 years old, and then two Deaf brothers, Mervyn and Ray. Her family moved to Napier when she was 11.

Doreen attended Sumner School for the Deaf for ten years, from 1921-1930 and experienced the Napier earthquake on 3 February, 1931.

After working several years and being laid off, she set up her own dressmaking business working from home under the name of 'Doreen Forman Dressmaker'. She met her future husband Max Howell (Deaf) at the Wellington Deaf Club and they married in June 1948. One month later they attended a function to celebrate Helen Keller's visit to Wellington. They had two Deaf children, me (Pam Witko) and Garry Howell. Doreen and Max played Indoor Bowls for the Deaf for many years. She is currently a Life Member of the Wellington Deaf Society.

Currently, Doreen has 9 grandchildren and 23 Great-grandchildren. She spent 60 years of her life living in Paraparaumu and is currently in a rest home in Johnsonville. After 100 years, she still likes spending time with family and friends and enjoys a lot of laughter!

Doreen is having a birthday party on the 6<sup>th</sup> September, people are welcome to join her centenary celebration. If you wish to join, please email me at [pwitko@actrix.gen.nz](mailto:pwitko@actrix.gen.nz), text 021 326 966.

Pam Witko

WDS Life Member



100<sup>TH</sup> BIRTHDAY

Please join us to celebrate  
*Doreen Howell*  
turning  
**100!**

On Sunday 6<sup>th</sup> September  
1:30pm – 4:30pm

*(address will be provided by RSVP)*

RSVP Pam 021 326 966 (text)  
or [pwitko@actrix.gen.nz](mailto:pwitko@actrix.gen.nz)



# Babies, babies and more babies!



**Congratulations to the following couples who all gave birth over the last few months:**

**Kirsten and Clive (Joshua)**

**Ginette and Daniel (Ethan)**

**Tarsha and James (Leo)**

**Elinor and Sam (Ash Koru)**

**Robert and Janice (Olivia Chloe)**

**Kerry and Marty (Radek)**

**Congratulations to all of you from all of us at WDS!**

**Hope you all are enjoying your little bundle of joy. We look forward to seeing you all at future family events.**

# We are making some changes...

and we want your feedback.

## What do you think?

- New Zealand Deaf Games in January?
- Separate competitions for CODA, Interpreters and other friends of the Deaf?
- 3-day timetable or 5-day timetable?

Visit [www.deafsports.co.nz](http://www.deafsports.co.nz) for more details about these proposed changes, or check our Facebook page.

We invite you to meet us:  
**Pelorus Trust Sports House**  
**Lower Hutt**  
**Tuesday 18th August - 7pm**



DEADLINE TO BUY AWARD FUNCTION TICKETS  
16 AUGUST 2015

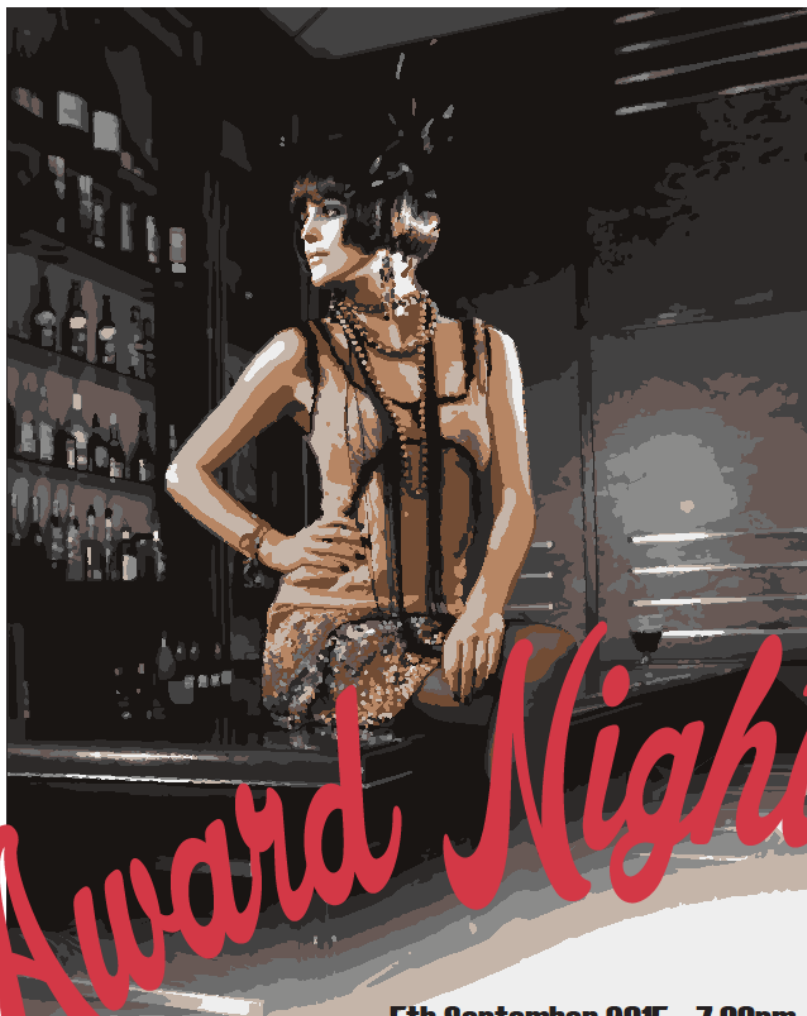
# 7TH NZ DEAF SHORT FILM FESTIVAL

4-5 SEPTEMBER 2015

WELLINGTON

[WWW.NZDSFF.CO.NZ](http://WWW.NZDSFF.CO.NZ)

# *New Zealand* **DEAF SHORT FILM FESTIVAL**



## *Award Night*

**5th September 2015 - 7.00pm**

**MAC'S FUNCTION CENTRE • 4 TARANAKI STREET, WELLINGTON**

**TICKET & INFORMATION : [WWW.NZDSFF.CO.NZ](http://WWW.NZDSFF.CO.NZ) • CONTACT: [ENQUIRY@NZDSFF.CO.NZ](mailto:ENQUIRY@NZDSFF.CO.NZ)**





# NZDSFF TICKETS AVAILABLE



## Ticket Prices

- ❖ \$80 – One film screening AND the Awards Function (pick a time of your choice)
- ❖ \$10 – One film screening

## Screening Times:

- ❖ Friday 4<sup>th</sup> September - 3.30pm
- ❖ Friday 4<sup>th</sup> September - 6.00pm
- ❖ Saturday 5<sup>th</sup> September - 4.30pm

## Awards Function:

- ❖ Saturday 5th September – 7.00pm

There may be limited door sales available for screenings, but to avoid missing out on your preferred screening time (due to limited seating) we recommend you buy your ticket in advance.

Check website: [www.nzdsff.co.nz](http://www.nzdsff.co.nz)

OR Email: [enquiry@nzdsff.co.nz](mailto:enquiry@nzdsff.co.nz)



# NZDSFF MERCHANDISE AVAILABLE



Adult T Shirt (also available in V Neck) \$30

Kids T Shirt \$28

Adult Pullover Hoodie \$50

(All in black)

Add on an extra \$5 for delivery outside of Wellington

Email [enquiry@nzdsff.co.nz](mailto:enquiry@nzdsff.co.nz) to order

order and payment must be received by the following cut off dates: Friday 26th June 2015  
and Friday 7th August 2015

## SIZING

(number in bracket is half chest size in cm)

Men round neck: S (54), M (56), L (58), XL (62), 2XL (66) XXXL (71), 5XL (79)

Women round neck: 6 (44), 8 (46), 10 (48), 12 (50), 14 (52.5), 16 (55), 18 (57.5), 20 (60),  
22 (66.5), 24 (71)

Men V Neck: S (48), M (50), L (52), XL (54) 2XL (56)

Women V neck: 8 (38), 10 (40), 12 (42), 14 (44), 16 (46), 18 (48), 20 (50)

Kid T Shirt: 2 (34), 4 (36), 6 (38), 8 (40), 10 (42), 12 (44), 14 (47), 16 (50)

Hoodie: S (57), M (60), L (63), XL (66), 2XL (70), 3XL (74), 4XL (82)



## Video Remote Interpreting (VRI) is a **free service** for Deaf people

### ➤ What is VRI?

VRI is a service that provides Deaf people access to a NZSL interpreter for communication with government agency staff when a face-to-face interpreter is not available.

### ➤ How does VRI work?

VRI uses video to connect a Video Interpreter in a remote location to a different location where a Deaf person and Hearing Person are meeting face to face.

For more information about how VRI works, how to access the VRI service and locations where the service is available go to: [www.vri.govt.nz](http://www.vri.govt.nz)

A joint government agency initiative



GOVERNMENT  
SERVICES

Delivered by:



Supported by:



To see this  
information  
in NZSL



NZRI18267\_AS-2014



**111**

**TXT**

**AN EMERGENCY  
TXT SERVICE**  
FOR DEAF & HEARING  
IMPAIRED PEOPLE

Visit Deaf Aotearoa to register and get more information.





# WELLINGTON Deaf Society

## MEMBERSHIP 2015 – 2016

NAME

ADDRESS

EMAIL ADDRESS

MOBILE

Memberships for 2015-2016 are **FREE** with the exception of posted newsletters.

PLEASE TICK:

☐

E-newsletter (email) **FREE**

☐

Newsletter (post) **\$10**

ARE YOU:

☐

DEAF

☐

HEARING

TYPE OF MEMBERSHIP:

☐

INDIVIDUAL MEMBERSHIP

☐

FAMILY MEMBERSHIP

*Above details are for statistical and funding purposes*

Send this form to address below, or give to bar staff, or email to [secretary@wds.org.nz](mailto:secretary@wds.org.nz)

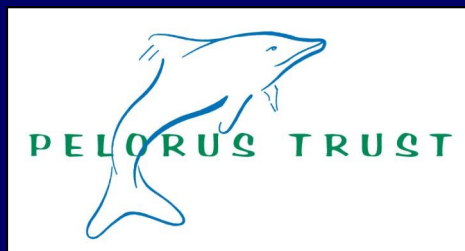
**PAYMENT METHODS:**

**CASH:** Pay to WDS Committee or bar staff

**CHEQUE:** Post payable cheque to address below, or give to bar staff.

**BANK DEPOSIT/TRANSFER:** (BNZ) 02-0560-0041556-00. Your reference: Name, memb 2015 (eg: JOHNMEMB2015) and email [treasurer@wds.org.nz](mailto:treasurer@wds.org.nz) when payment has been made.

Wellington Deaf Society, PO Box 6028, Marion Square, Wellington



**Absolutely Positively  
Wellington City Council**  
Me Heke Ki Pōneke



**SENDER:**

Wellington Deaf Society  
PO Box 6028  
Marion Square  
Wellington