

ABSOLUTELY POSITIVELY WINDY DEAF



LAST DAY AT WELLINGTON DEAF CLUB

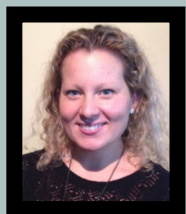


June 2015

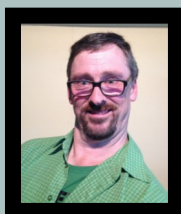
Contents

WDS Board of Management	3
President's Report	4
Join WDS	6
WDS Newsletter Advertising Rates	7
Events Calendar	8
Last Day of Wellington Deaf Club	9
The Move	11
Family Fun Day	13
Cochlear Cup Deaf Rugby Match	14
4th Auckland Deaf Poker Championship	15
7th NZ Deaf Short Film Festival Poster	16
7th NZ Deaf Short Film Festival	17
NZ Deaf Short Film Festival Ticket Sale	18
NZ Deaf Short Film Festival Merchandise Available	19
Video Remote Interpreting Service	20
TXT 111	21
WDS Membership Form	22

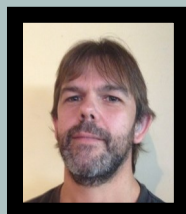
WDS BOARD OF MANAGEMENT



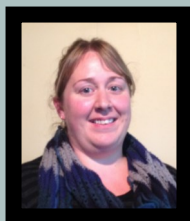
Shannon Krogmann
President



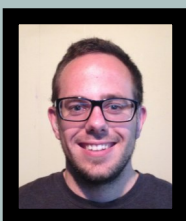
Robert Cameron
Treasurer



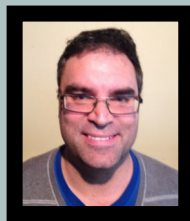
Riaan J Van Vuuren
Co Treasurer



Joanne Becker
Secretary



Erich Krogmann
Committee

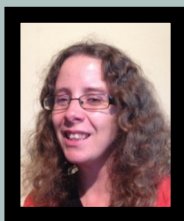


Craig Becker
Committee



Candice David
Committee

Chuck Odsey
Committee



Nicolette J Van Vuuren
Editor Newsletter

Life Members: Florence McNatty, Doreen Howell, Janette Smith, Toni Rees, Tony Walton, Kaz Witko, Pam Witko, Maureen Thompson, Robert Cameron, Alex Jones, Tony Kuklinski, Eric Blum

PRESIDENT'S REPORT

Hello all,

Watch this in NZSL: <http://youtu.be/z2U-V4svM5s>

Hope you all have been keeping well. Recently in Wellington we went through torrential rainstorm, which caused a lot of flooding havoc in many areas of Wellington.

Now, the Deaf Club on Marion Street has been finalised. We had a farewell gathering on the 8th May, there was such a great turn out of approximately 50 people. I would like to thank you all for coming along, it is very humbling to see those who came, sharing stories and having a chat. If you took photos of the evening, please share.

Many of you have questioned where will the usual Fridays meet up, the Committee will be organising venues around Wellington region to use their facilities for us to gather. This will not be limited to only the Wellington City, we are wanting to scatter the gatherings meet ups around Wellington region.

The Wellington Deaf Club on Marion Street may be closed, but the Wellington Deaf community is certainly alive, please be in touch with us, join our events and our usual Friday gatherings. We strive having the community with us, you are keeping us on our toes, we are not dying.

During NZSL Week, we took the opportunity to have a 'Let's Raise It!' BBQ fundraiser at Waitangi Park joining along with Deaf Aotearoa's NZSL Week Expo. It was a blustery day being in the shade, but was wonderful seeing people together to celebrate our language.

Over a weekend in May, we had NZ Deaf Blacks Wellington players help us pack our things to our storage at Kaiwharawhara, they were gold and made every nook of our storage unit filled up after concerns of having a second unit could be required – many thanks to all of the players for giving up their Sunday to help us. We have made a donation towards player's tournament costs for their upcoming tournament soon.

We have received some enquires from you in not receiving your membership cards. As you know, we have had our new logo, which was absolutely necessary to update our membership cards. Apologies for the delay, but the new membership cards have been posted out to current members. If you don't receive anything. the contact info we have for you is not up to date, get in touch. Remember membership is free this year if you choose to receive newsletters via email, \$10 for these who wish to receive via post, and is open to everyone.

We have some events organised through the year and would be wonderful if you can attend! If you have ideas for an event, please do be in touch – we are happy to help at any way.

Cheers,

Shannon Krogmann
President



For a NZSL version of this report, please visit our Facebook page.

WDS Online Fundraising website: <http://www.givealittle.co.nz/org/wds>

about WDS

CONTACT US



Email: secretary@wds.org.nz



Facebook: Wellington Deaf Society



Post: PO Box 6028, Marion Square, Wellington

BECOME A MEMBER

We welcome everyone to WDS, and encourage everyone to join as a member of WDS—families, hearing people, NZSL Students, interpreters, hard of hearing, and Deaf people.

Membership for 2015 is free, with email newsletter. If you want to receive a newsletter in the post it will cost \$10 a year. Fill out a membership form to join!

TEXT NOTIFICATIONS



Do you want to be informed when WDS is open, and when special events are on?

Text 022 024 5229 to be added to the list.

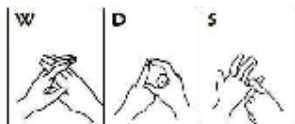
NEWSLETTER ADVERTISING

If you wish to place an advertisement in the newsletter please email newsletter@wds.org.nz. Please see flyer in newsletter for additional information.

Upcoming deadline dates: 20 May, 20 June, 20 July.

FRIDAY DEAF CLUBS

WDS has a Deaf Club that meets fortnightly on a Friday evening (7pm onwards) at various locations around Wellington. Keep your eye on our Facebook page or on the events page in this newsletter for location and dates. Email secretary@wds.org.nz if you have any queries. In addition to the Deaf Club, special events are organised occasionally and will be advertised in advance.



Wellington Deaf Society

Newsletter Advertising Rates

(Prices are exclusive of GST)

Newsletter is A5 size.

Advert must be provided by you.

Full page in full colour \$30 per month (portrait or landscape orientation)

Half page in full colour \$15 per month (landscape only)

5% discount for those who pay for a full year up front (11 issues for \$313.50 full page, or \$156.75 half page)

WDS sponsors (at the BOM's discretion) can get up to three months advertising free

Community and fundraising events organised by the Deaf community (including other Deaf Clubs/Societies), for the Deaf community will be advertised for free

Current WDS Deaf Members get free advertising.

Audience Reach

Electronic newsletter emailed out monthly in PDF format.

It is also posted out to a number of members with no internet access, and to other Deaf Clubs/Societies around New Zealand, for their members to read.

A copy of the newsletter is readily available at the Deaf Club, for guests to read.

In the short to medium term, we aim to have the newsletters available for download on the WDS website, when we develop a new website.

Deadline for submission of advert – 20th of every month, for following month's newsletter. Please note there is no newsletter in January. Email secretary@wds.org.nz.



EVENTS CALENDAR

JUNE AND JULY

FRIDAY
5th June

For Deaf Club
1841
Johnsonville

SUNDAY
7th June

Family Fun Day
Newlands
Community Centre
Batchelor Road
Newlands

FRIDAY
19th June

For Deaf Club
The Empire
Petone

FRIDAY
3rd July

For Deaf Club
Roundabout Pub
Tawa

FRIDAY
17th July

For Deaf Club
The Chill
180 High Street
Lower Hutt

LAST DAY AT WELLINGTON DEAF CLUB

8TH MAY 2015

On Friday 8th May we had our last Deaf Club gathering at 32 Marion Street, before the move. It was great to see a lot of people there to come and share memories. Thank to everyone that came to say farewell to 32 Marion Street.





The last two photos show a group of Deaf members that were members of WDS when it moved from Willis Street to Marion Street—Kaz Witko, Eric Blum, Pam Witko, Tony Kuklinski, Wayne Riggs, Cameron Ross, Maureen Tompson, Declan Fitzpatrick and Lyneen Allen.

THE MOVE

Over the weekend of the 15th and 16th May we moved out stuff out of the Deaf Club and into storage. Special thanks to Pam and Kaz Witko, Karen and Simon Bell, Jared Flitcroft, Daniel Janse Van Vuuren and Cameron Ross for helping some BOM Members on Saturday, and special thanks again to Cameron Ross, Clive Morgan, Darryl Alexander and some team members of the Deaf Blacks who did most of the heavy moving on Sunday. The Deaf Blacks did it as a fundraiser towards two overseas trips, and did a great job!





FAMILY FUN DAY

Fun for the whole family!

WHEN Sunday 7 June, 1.30 - 4.30pm

WHERE Newlands Community Centre,
Batchelor Road, Newlands

BRING Food, drinks and your energy!



Cochlear Cup

Deaf Rugby Match

NZ Deaf Blacks vs Australia Silent Knights

12th - 14th June 2015

Friday: Welcome TBC
Saturday: Open night TBC
Sunday: Kick off 1pm
Social Event TBC



**Held at Christchurch Park
250 Westminster Street
Mairehau
CHRISTCHURCH**



www.nzdrfu.org.nz
secretary@nzdrfu.org.nz

Associate
Members by:



4th Auckland Deaf Poker Championship



HOSTED BY

SkyCity Casino

Sammy's Place
Main Casino Floor
Auckland



SIDE EVENT - FRIDAY 19TH JUNE

PAIRS - OPEN TO DEAF/HEARING

6PM START

\$150 (\$120 + \$30) BUY IN

8,000 STACK - 15MIN LEVELS

MAIN EVENT - SATURDAY 20TH JUNE

INDIVIDUAL - DEAF ONLY

12.00PM START

\$100 (\$85 + \$15) BUY IN

15,000 STARTING STACK - 20MIN LEVELS

BLINDS WITH ANTE

BEN CLIFFORD - deafpokernz@gmail.com OR GO TO AUCKLAND ACES PAGE ON FACEBOOK

AGE - 20+ LIMITED SEATS AVAILABLE CASH PRIZES FOR PLAYERS BAR/FOOD AVAILABLE SUPPORTERS WELCOME

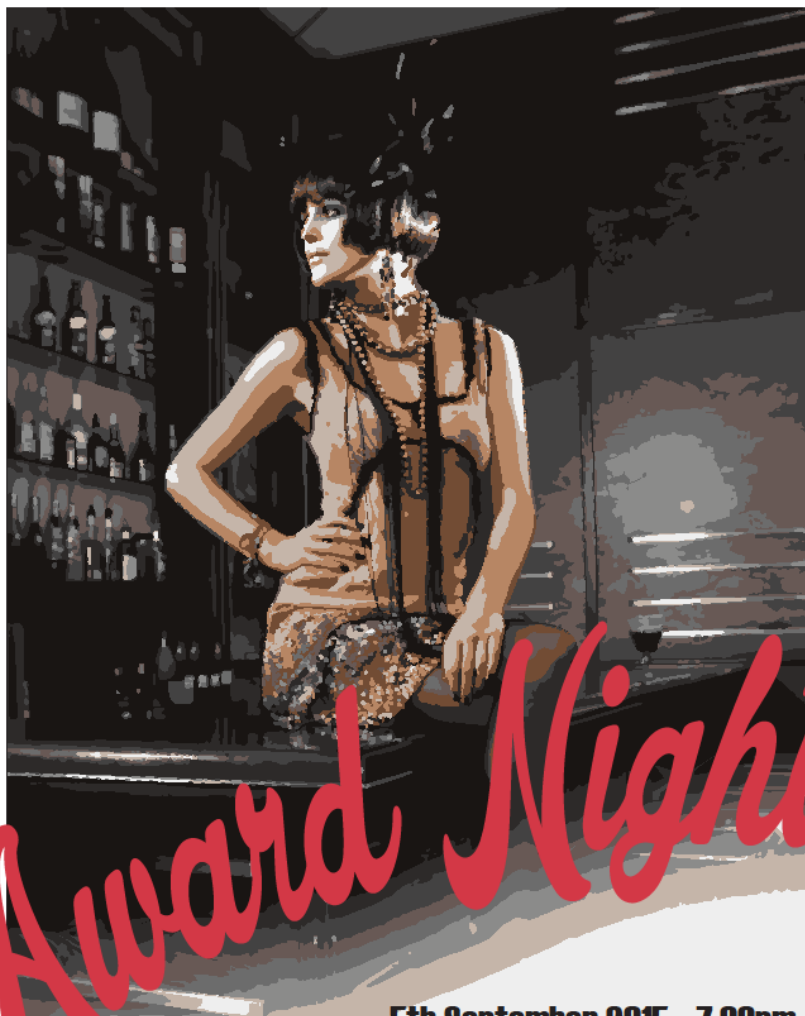


4-5 SEPTEMBER 2015

WELLINGTON

WWW.NZDSFF.CO.NZ

New Zealand **DEAF SHORT FILM FESTIVAL**



5th September 2015 - 7.00pm

MAC'S FUNCTION CENTRE • 4 TARANAKI STREET, WELLINGTON

TICKET & INFORMATION : WWW.NZDSFF.CO.NZ • CONTACT: ENQUIRY@NZDSFF.CO.NZ





NZDSFF TICKETS AVAILABLE



Ticket Prices

- ❖ \$80 – One film screening AND the Awards Function (pick a time of your choice)
- ❖ \$10 – One film screening

Screening Times:

- ❖ Friday 4th September - 3.30pm
- ❖ Friday 4th September - 6.00pm
- ❖ Saturday 5th September - 4.30pm

Awards Function:

- ❖ Saturday 5th September – 7.00pm

There may be limited door sales available for screenings, but to avoid missing out on your preferred screening time (due to limited seating) we recommend you buy your ticket in advance.

Check website: www.nzdsff.co.nz

OR Email: enquiry@nzdsff.co.nz



NZDSFF MERCHANDISE AVAILABLE



Adult T Shirt (also available in V Neck) \$30

Kids T Shirt \$28

Adult Pullover Hoodie \$50

(All in black)

Add on an extra \$5 for delivery outside of Wellington

Email enquiry@nzdsff.co.nz to order

order and payment must be received by the following cut off dates: Friday 26th June 2015
and Friday 7th August 2015

SIZING

(number in bracket is half chest size in cm)

Men round neck: S (54), M (56), L (58), XL (62), 2XL (66) XXXL (71), 5XL (79)

Women round neck: 6 (44), 8 (46), 10 (48), 12 (50), 14 (52.5), 16 (55), 18 (57.5), 20 (60),
22 (66.5), 24 (71)

Men V Neck: S (48), M (50), L (52), XL (54) 2XL (56)

Women V neck: 8 (38), 10 (40), 12 (42), 14 (44), 16 (46), 18 (48), 20 (50)

Kid T Shirt: 2 (34), 4 (36), 6 (38), 8 (40), 10 (42), 12 (44), 14 (47), 16 (50)

Hoodie: S (57), M (60), L (63), XL (66), 2XL (70), 3XL (74), 4XL (82)



Video Remote Interpreting (VRI) is a **free service** for Deaf people



What is VRI?

VRI is a service that provides Deaf people access to a NZSL interpreter for communication with government agency staff when a face-to-face interpreter is not available.



How does VRI work?

VRI uses video to connect a Video Interpreter in a remote location to a different location where a Deaf person and Hearing Person are meeting face to face.

For more information about how VRI works, how to access the VRI service and locations where the service is available go to: www.vri.govt.nz

A joint government agency initiative



GOVERNMENT
SERVICES

Delivered by:



Supported by:



To see this
information
in NZSL



NZRI0207_AS-2014



111

TXT

**AN EMERGENCY
TXT SERVICE**
FOR DEAF & HEARING
IMPAIRED PEOPLE

Visit Deaf Aotearoa to register and get more information.



WELLINGTON Deaf Society

MEMBERSHIP 2015 – 2016

NAME

ADDRESS

EMAIL ADDRESS

MOBILE

Memberships for 2015-2016 are **FREE** with the exception of posted newsletters.

PLEASE TICK:

☐

E-newsletter (email) FREE

☐

Newsletter (post) \$10

ARE YOU:

☐

DEAF

☐

HEARING

TYPE OF MEMBERSHIP:

☐

INDIVIDUAL MEMBERSHIP

☐

FAMILY MEMBERSHIP

Above details are for statistical and funding purposes

Send this form to address below, or give to bar staff, or email to secretary@wds.org.nz

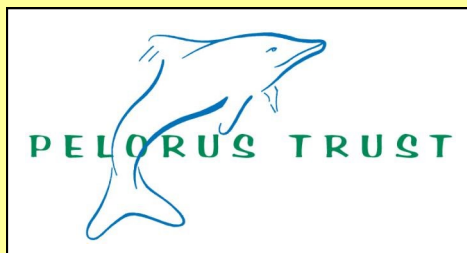
PAYMENT METHODS:

CASH: Pay to WDS Committee or bar staff

CHEQUE: Post payable cheque to address below, or give to bar staff.

BANK DEPOSIT/TRANSFER: (BNZ) 02-0560-0041556-00. Your reference: Name, memb 2015 (eg: JOHNMEMB2015) and email treasurer@wds.org.nz when payment has been made.

Wellington Deaf Society, PO Box 6028, Marion Square, Wellington



**Absolutely Positively
Wellington City Council**
Me Heke Ki Pōneke



SENDER:

Wellington Deaf Society
PO Box 6028
Marion Square
Wellington