

ABSOLUTELY POSITIVELY WINDY DEAF



MEN'S CAKE COMPETITION



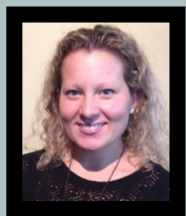
**WELLINGTON
Deaf Society**

November 2015

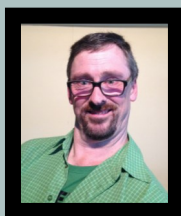
Contents

WDS Board of Management	3
President's Report	4
Join WDS	5
Events Calendar	6
Men's Cake Competition	7
John Smith Visual Comedy NZ Tour	8
Santana Chapman	9
Deaf Netball 2016	10
Video Remote Interpreting Service	11
TXT 111	12
WDS Membership Form	13

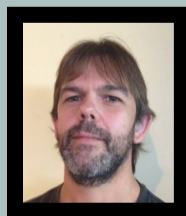
WDS BOARD OF MANAGEMENT



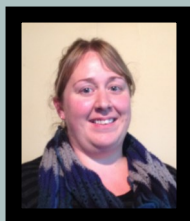
Shannon Krogmann
President



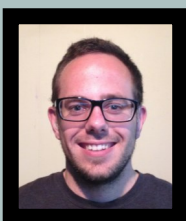
Robert Cameron
Treasurer



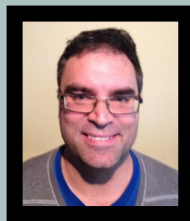
Riaan J Van Vuuren
Co Treasurer



Joanne Becker
Secretary



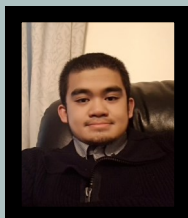
Erich Krogmann
Committee



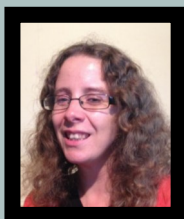
Craig Becker
Committee



Candice David
Committee



Chuck Odsey
Committee



Nicolette J Van Vuuren
Editor Newsletter

Life Members: Florence McNatty, Doreen Howell, Janette Smith, Toni Rees, Tony Walton, Kaz Witko, Pam Witko, Maureen Thompson, Robert Cameron, Alex Jones, Tony Kuklinski, Eric Blum

PRESIDENT'S REPORT

November already!

It has been a relatively quiet month, but with some new exciting developments.

You may recall a while ago that WDS received a grant from the NZSL Board towards the costs of employing a Community Coordinator to be responsible for creating opportunities to bring together NZSL users outside of work and education, to enable the use of NZSL in a NZSL-friendly setting.

We are pleased to announce that we have appointed Lyneen Allen as the Community Coordinator. Starting the week of Monday 19th October, she will be working 10 hours a week in this position, organising events for WDS.

Most of you will be familiar with her, as she has been involved in the Deaf Community for many years now. I hope you all will make her feel welcome.

There has been an exciting, laugh filled event recently in having a British Deaf comedian, John Smith. I hope you went to his show – it has been a great opportunity to have him here to deliver a show and a workshop across the country. Earlier in October, we had a Men's Cake Competition – all 'man' made cakes. We had 6 bakers baking a cake from scratch without any help from anyone. This event was very successful and very entertaining! The winner was to our Mark Berry for baking an Elizabeth cake, Jake LaBerge came second, and third went to Craig Becker. This event attracted a lot of interest and this is something we are considering looking at expanding for next year. The men's suggestion for us ladies was to do a BBQ or building up something...

Christmas is fast approaching! We have our Christmas gathering on the 19th December at Amesbury School, this event is welcome to all. It will be wonderful to see you all join us and wrap up 2015, and to begin a new year ahead of us.

An wee update of our website – it is ALMOST ready! We will be in touch with you all of our launch date.

Keep cool as summer gears ahead of us.

Regards,

Shannon

WDS Online Fundraising website: <http://www.givealittle.co.nz/org/wds>

about WDS

CONTACT US



Email: secretary@wds.org.nz



Facebook: Wellington Deaf Society



Post: PO Box 6028, Marion Square, Wellington

BECOME A MEMBER

We welcome everyone to WDS, and encourage everyone to join as a member of WDS—families, hearing people, NZSL Students, interpreters, hard of hearing, and Deaf people.

Membership for 2015 is free, with email newsletter. If you want to receive a newsletter in the post it will cost \$10 a year. Fill out a membership form to join!

TEXT NOTIFICATIONS



Do you want to be informed when WDS is open, and when special events are on?

Text 022 024 5229 to be added to the list.

NEWSLETTER ADVERTISING

If you wish to place an advertisement in the newsletter please email newsletter@wds.org.nz. Please see flyer in newsletter for additional information.

Upcoming deadline dates: 20 November, 20 December.

FRIDAY DEAF CLUBS

WDS has a Deaf Club that meets fortnightly on a Friday evening (7pm onwards) at various locations around Wellington. Keep your eye on our Facebook page or on the events page in this newsletter for location and dates. Email secretary@wds.org.nz if you have any queries. In addition to the Deaf Club, special events are organised occasionally and will be advertised in advance.

EVENTS CALENDAR

NOVEMBER AND DECEMBER

FRIDAY
6th November

Supply Room
105 Mana
Esplanade
Paremat

FRIDAY
20th November

CQ Hotel
Cuba Street
(In Bar)
Wellington

FRIDAY
4th December

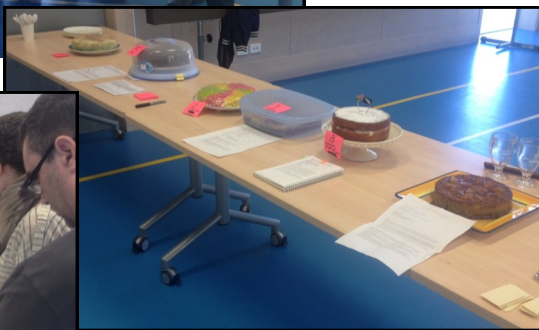
Roundabout Pub
99 Main Road
Tawa

SATURDAY
19TH DECEMBER

Amesbury School
Hall ,
Amesbury Drive,
Churton Park
4pm to 9pm

MEN'S CAKE **COMPETITION**

At 3rd October 2015, Amesbury School, Churton Park, six men bake their own cakes. Mark Berry won first prize, Jake LaBerge came second and Craig Becker came third. Well done men. Yummy six cakes.



JOHN SMITH BEAUTIFUL BSL



John Smith, a BSL Comedy from UK came to Wellington and put on a show in Wellington at Little Theatre in Lower Hutt, as part of his NZ tour. It was a fun night with a lot of laughter.





Santana Chapman with her two Bronze Medals

10th October 2015, Santana Chapman (17) of the Coastal Wanderers Swimming Squad, Kapiti Coast, has won two Bronze Medals in the 50m and 200m Break stroke at the 8th Asia Pacific Deaf Games in Taoyuan,, Taiwan. These are New Zealand's first ever medals at the Asia Pacific Deaf Games. Congratulations Santana Chapman.



25TH/26TH MARCH 2016
Deaf/Hearing
Impaired/Cochlear Netball
is back!

We are hosting 25th New Zealand Deaf Rugby Union next year during Easter weekend on the 25th – 27th March 2016, conjunction with the National Deaf Rugby Championships in Auckland. We would like to support the Deaf Netball. This will be an exciting weekend of Deaf netball and rugby.



If interested to play please contact your local host

MORE INFORMATION WILL COME AT LATER DATE!

Support by Lyneen Allen

25th/26th
March 2016

There will be a
netball match on the
Friday and Saturday
night

Come on
Northern, Central,
& Southern
Its fun social game!

Get together and play
netball.

GO GO GO
WOMEN!

HOST'S

Northern
SAPPHIRE UALESI
Email: sapphen8@live.com

Central
CHANTELL DE CLEENE
Text no 021 070 9927

Southern
LISI AGNEW
Text no 021 619 201



Video Remote Interpreting (VRI) is a **free service** for Deaf people

➤ What is VRI?

VRI is a service that provides Deaf people access to a NZSL interpreter for communication with government agency staff when a face-to-face interpreter is not available.

➤ How does VRI work?

VRI uses video to connect a Video Interpreter in a remote location to a different location where a Deaf person and Hearing Person are meeting face to face.

For more information about how VRI works, how to access the VRI service and locations where the service is available go to: **www.vri.govt.nz**

A joint government agency initiative



GOVERNMENT
SERVICES

Delivered by:



Supported by:



To see this
information
in NZSL



NZRI0207_AS-2014



111

TXT

**AN EMERGENCY
TXT SERVICE**
FOR DEAF & HEARING
IMPAIRED PEOPLE

Visit Deaf Aotearoa to register and get more information.



WELLINGTON Deaf Society

MEMBERSHIP 2015 – 2016

NAME

ADDRESS

EMAIL ADDRESS

MOBILE

Memberships for 2015-2016 are **FREE** with the exception of posted newsletters.

PLEASE TICK:

☐

E-newsletter (email) FREE

☐

Newsletter (post) \$10

ARE YOU:

☐

DEAF

☐

HEARING

TYPE OF MEMBERSHIP:

☐

INDIVIDUAL MEMBERSHIP

☐

FAMILY MEMBERSHIP

Above details are for statistical and funding purposes

Send this form to address below, or give to bar staff, or email to secretary@wds.org.nz

PAYMENT METHODS:

CASH: Pay to WDS Committee or bar staff

CHEQUE: Post payable cheque to address below, or give to bar staff.

BANK DEPOSIT/TRANSFER: (BNZ) 02-0560-0041556-00. Your reference: Name, memb 2015 (eg: JOHNMEMB2015) and email treasurer@wds.org.nz when payment has been made.

Wellington Deaf Society, PO Box 6028, Marion Square, Wellington



**Absolutely Positively
Wellington City Council**

Me Heke Ki Pōneke



NEW WORLD
Wellington City

SENDER:

Wellington Deaf Society

PO Box 6028

Marion Square

Wellington